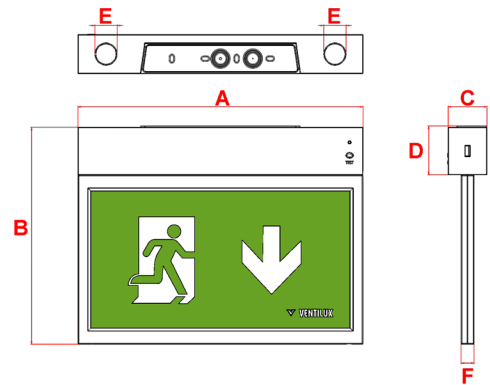


Atlantic Gen 2

Exit Sign Self Test



With Additional
Recessing Kit



| | | | |
|-----------------------------------|------------------------|---------------------------|---------------------------------|
| 30m Viewing Distance | IP 40 | LiFePO4 Battery | Wall and Ceiling Mounting |
| 1.4Kg | 5700K | Class II | 8Y Warranty |

Materials

Housing: ABS
Decal Legend: Polypropylene

Standard Colour: White - RAL 9016
Alternative Colour: Black - RAL 9017
Add **/BL** to order code

Warranty

Standard Warranty: 8 Years
Alternative Warranty: 10 Years
Add **/10Y** to order code

| | |
|---|--|
| Order Code | AT2M3/LED/ST |
| Mode of operation | Maintained Self Test |
| Emergency duration | 3 hours |
| Input voltage | 230/240V (207VAC - 264VAC) 50/60Hz |
| Power consumption | 4.5VA, $I_{nom} = 19mA$ (Full Battery) |
| Battery type | Rechargeable LiFePO4 Battery 3.2V 3.2Ah |
| Battery low voltage cut off | 2.5V DC |
| Battery discharge current @ 3.2V DC | 0.43A |
| Lamp | 1W LED Strip |
| Lamp colour | 5700K |
| Lamp Life | $L_{80}^{B50} = 80000$ Hours |
| Viewing Distance | 30m |
| Nominal lamp voltage | $V_{rated} = 3V$ DC |
| Nominal lamp current | $I_{rated} = 0.35A$ CC |
| Nominal lamp power | $P_{rated} = 1W$ |
| Maximum output voltage with no lamp connected | U-OUT = 5V DC |
| Ingress Protection | IP40 |
| Cable entry | 20mm on top and rear of product |
| Luminaire class | Class II |
| Product Weight | 1.4Kg |
| Packaging Weight | 0.14Kg |
| Standards | EN61347-2-7, EN61347-2-13, EN 60598-2-22, EN 55015 |
| Environment | 0°C to 45°C up to 80% relative humidity. |

| System | Order Code | Mode of Operation | Battery | Battery P/N | Viewing Distance | Dimensions (mm) | | | | | |
|--|--------------|-------------------|---------------------|-------------|------------------|-----------------|-----|----|------|----|----|
| | | | | | | A | B | C | D | E | F |
| Self-Test | AT2M3/LED/ST | Maintained | LiFePO4 3.2V, 3.2Ah | 70261 | 30 | 330 | 250 | 45 | 56.5 | 26 | 15 |
| Alternative Systems Available: Specification sheets available upon request | | | | | | | | | | | |
| Standalone | AT2M3/LED | Maintained | LiFePO4 6.4V, 0.6Ah | 70270 | 30 | 330 | 250 | 45 | 56.5 | 26 | 15 |
| DALI Wireless | ATM3/LED/DAW | Maintained | LiFePO4 3.2V, 3.2Ah | 70261 | 30 | 330 | 275 | 60 | 80 | 26 | 15 |
| DALI | AT2M3/LED/DA | Maintained | LiFePO4 3.2V, 3.2Ah | 70261 | 30 | 330 | 250 | 45 | 56.5 | 26 | 15 |

| Available Accessories | | | | | |
|-----------------------|---------------|----------|-------------|----------------|----|
| Order Code | Description | Material | Cutout (mm) | Dimensions(mm) | |
| AT/RK | Recessing Kit | ABS | 370 x 55 | 390 | 80 |

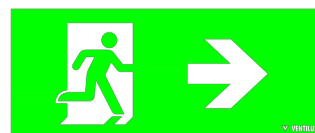
Included Legends



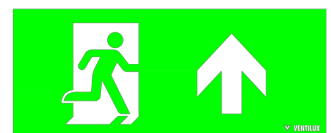
ISO 01



ISO 02



ISO 03



ISO 04