

NOVA CIRCULAR

PREMIUM RANGE

Product Features

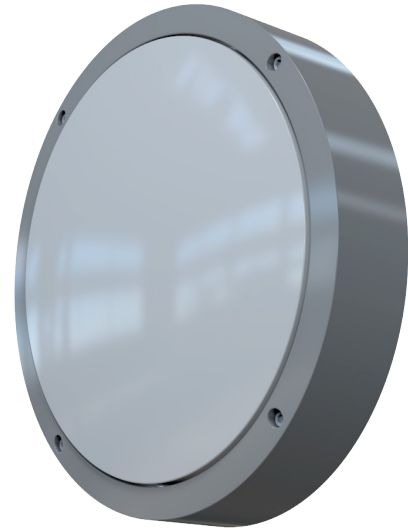
- 54 high output SAMSUNG white LEDs.
- Lamp colour - 3500K warm white.
- 300 lumens in emergency.
- 1080 lumens in mains.
- Competitively priced, high powered circular LED bulkhead.
- Easy to install and maintain.
- Flame retardant polycarbonate opal diffuser.
- Vandal resistant screws.
- IP65 as standard.
- *For 5000K cool white lamp - contact Ventilux.*

Materials

- Housing - cast aluminium.
- Diffuser - flame retardant polycarbonate plastic.
- Batteries (self-contained) - 4.8V 4.5A/h Ni-Cd.
- Ni-Mh available upon request.

Installation notes

- Suitable for wall and ceiling mounting.
- Cable entry on rear of unit.
- Dimensions - See diagram.
- Weight: 4Kg.
- Temperature: 0°C - 45°C.



*Equipment dimensions may vary with different systems.



Standard colour:



Grey - RAL 7040 - add /GY to order code

Alternative colour:



Black - RAL 9017 - add /BL to order code

Other RAL colours available upon request

System Mode

- Self contained. Non-Maintained 3 hour
- Self contained. Maintained 3 hour

Part Number

- ZNCNM3/LED
- NCM3/LED
- EYELID option - add /EY to part number.*
- GUARD option - add /GU to part number.*

Premium Range products carry 6 years warranty as standard.

Alternative **Warranty** option

10 Years

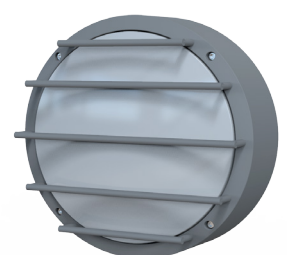
Add /10Y to Part Number

For Warranty Terms please visit the Ventilux website

Also available



Eyelid option



Guard option

This specification sheet is a generic specification sheet. Specific specification sheets for Central Battery, Addressable Testing Systems etc are available from Ventilux upon request.