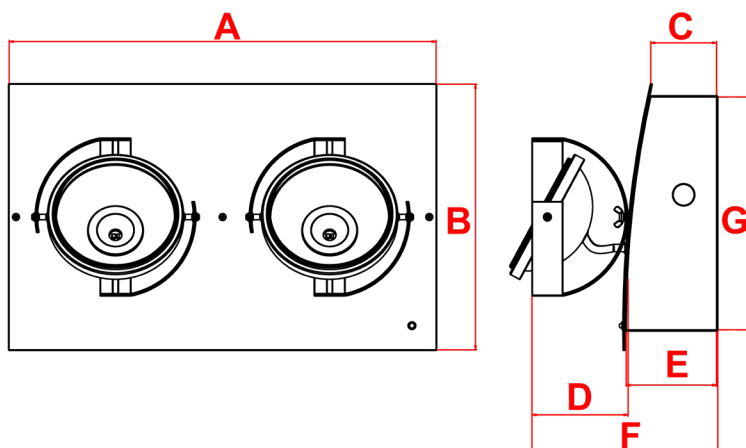
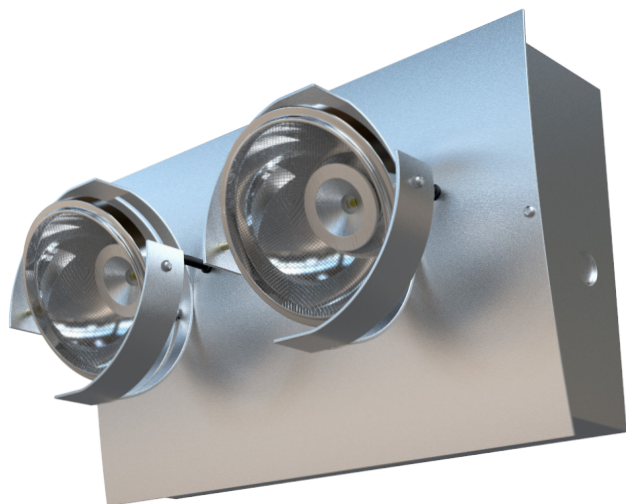


# Scout

## Wall Mounted Twinspot



|                  |              |          |                                 |
|------------------|--------------|----------|---------------------------------|
| 2x300<br>Lumens  | 2x3<br>Watts | 2.6 Kg   | Wall and<br>Ceiling<br>Mounting |
| Ni-Cd<br>Battery | Class<br>I   | IP<br>40 | 6Y<br>Warranty                  |

## Materials

Housing: Body- Powder Coated Steel  
Lid- Stainless Steel  
Standard Colour: Reflectors- Polished Aluminium  
Chrome

Alternative Colours Available Upon Request

## Warranty

Standard Warranty: 6 Years  
Alternative Warranty: 10 Years  
Add /10 Years to Order Code

|   |  |
|---|--|
| Order Code                                    | SC6LED/NM3   |
| Mode of operation                             | Non-Maintained                                     |
| Emergency duration                            | 3 Hours  |
| Input voltage                                 | 230-240V AC  |
| Power consumption                             | 5.5VA  |
| Battery type                                  | 4.8V 4.5Ah Ni-Cd                                   |
| Battery low voltage cut off                   | 4V   |
| Battery discharge current @ 4.8V DC           | 1.1A   |
| Lamp  | 2 x 3W Cree LED                                    |
| Lamp colour                                   | 6000K  |
| Lamp lumen level in emergency                 | 2 X 300  |
| Nominal lamp voltage                          | 6V   |
| Nominal lamp current                          | 0.65A  |
| Nominal lamp power                            | 2 X 3W   |
| Maximum output voltage with no lamp connected | U-OUT=13V DC                                       |
| Cable entry                                   | 20mm on sides and rear of product                  |
| Luminaire class                               | Class I  |
| Product Weight                                | 2.6Kg  |
| Packaging Weight                              | 0.28Kg   |
| Standards                                     | EN61347-2-7, EN61347-2-13, EN 60598-2-22, EN 55015 |
| Environment                                   | 0°C to 45°C up to 80% relative humidity            |

| System   | Order Code      | Mode of Operation | Battery           | Battery P/N | Lumens (Emergency) | Dimensions (mm) |     |    |    |    |     |     |
|--|-----------------|-------------------|-------------------|-------------|--------------------|-----------------|-----|----|----|----|-----|-----|
|  |                 |                   |                   |             |                    | A               | B   | C  | D  | E  | F   | G   |
| Standalone   | SC6LED/NM3      | Non-Maintained    | 4.8V, 4.5Ah Ni-Cd | 70123       | 2 x 300            | 345             | 215 | 53 | 78 | 73 | 150 | 188 |
| Alternative Systems Available: Specification Sheets Available Upon Request |                 |                   |                   |             |                    |                 |     |    |    |    |     |     |
| DALI   | SC6LED/NM3/DALI | Non-Maintained    | 6V, 4.5Ah Ni-Cd   | 70153       | 2 x 300            | 345             | 215 | 53 | 78 | 73 | 150 | 188 |
| Central Battery  | ZSC6LED230MFRS  | Slave             | -                 | -           | 2 x 300            | 345             | 215 | 53 | 78 | 73 | 150 | 188 |