

# VISOR LED DS

COMMERCIAL RANGE

## Product Features

- 10 high output white LEDs.
- Lamp colour - 5000K.
- Lamp power - 0.6W.
- Competitively priced, LED double sided EXIT luminaire.
- Easy to install and maintain.
- Hinged gear tray.
- Recessing kit available.
- IP65 as standard.
- 22m viewing distance.
- Class I.

## Materials

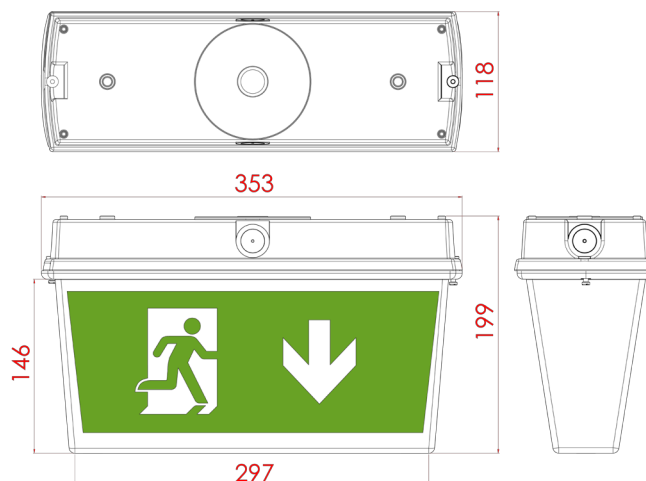
- Body - flame retardant ABS plastic.
- Diffuser - flame retardant ABS plastic.
- Gear Tray - powder coated sheet steel.
- Batteries (self-contained) - 3.6V 1.8A/h Ni-Cd.

## Installation notes

- Suitable for ceiling mounting.
- 20mm cable entry on side of unit.
- 20mm cable entry on rear of unit.
- Dimensions - See diagram.
- Weight: 1Kg.
- Temperature range - 0°C to 45°C.



\*Equipment dimensions may vary with different systems.



## EXIT sign legend options



ISO 7010

\*Special legends available upon request.

## Standard colour:



White - RAL 9016

## System Mode

Self contained. Maintained 3 hour

## Part Number

VIM3/LED2

Choose arrow direction.



ISO 01



ISO 02



ISO 03



ISO 04

Commercial Range products carry 3 years warranty as standard.

## Alternative Warranty option

6 Years

Add /6Y to Part Number

For Warranty Terms please visit the Ventilux website