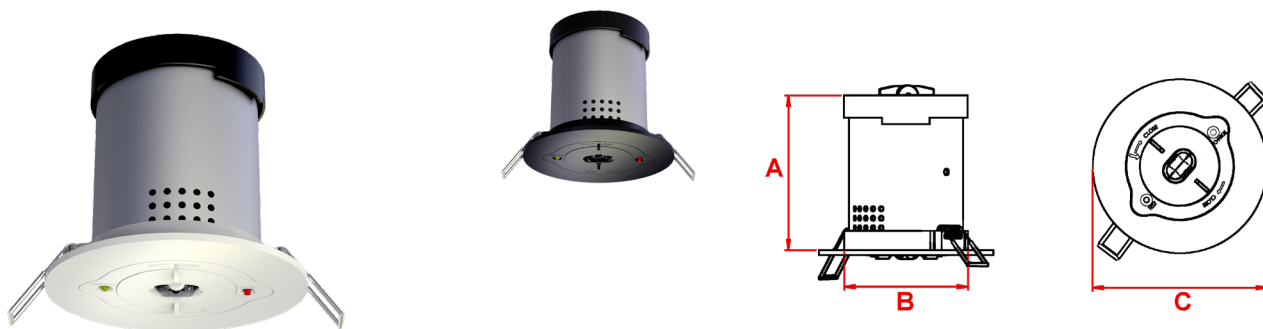


Evolens

Recessed Downlight



192/228 (ES/OP) Lumens	3 Watts	6500K	Recessed Mounting
Li-Ion Battery	Class I	IP 44	3Y Warranty

Order Code	EVLNM3/LED3W*
Mode of operation	Non-maintained
Input voltage	230V/240VAC 50/60Hz
Power consumption	7.9VA
Battery type	Rechargeable Lithium-Ion 3.7V 2.6Ah
Battery discharge current @ 3.7V	0.6A
Lamp	3 Watt WHITE LED - 50000 Hr
Lamp Colour	Cool White - 6500K
Lumen level in emergency	192 lumens in Escape Route 228 lumens in Open Plan
Ingress protection	IP44 from below the front face
Cable entry	Recessed Pack
Cutout Size	100mm Cutout - 110mm Minimum Ceiling Void
Classification	Class I
Product Weight	0.3kg
Packaging Weight	0.05Kg
Standards	EN61347-2-7, EN61347-2-13, EN 60598-2-22
Environment	0°C to 45°C up to 80% relative humidity

Materials

Lamp Housing: Aluminium
Lamp Head: ABS

Standard Colour: *White - RAL 9016
Add **/WH** to Order Code

Alternative Colours: *Black - RAL 9017
Add **/BL** to Order Code

Warranty

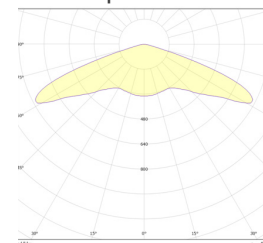
Standard Warranty: 3 Years
Alternative Warranty: 6 Years
Add **/6Y** to Order Code

System	Order Code	Mode of Operation	Battery	Lumens (Emergency)	Dimensions (mm)		
					A	B	C
Standalone	EVLNM3/LED3W*	Non-Maintained	3.7V, 2.6Ah Li-Ion	Open Plan - 228 Escape Route - 192	105	78	110

Photometrics

Mounting Height	Lighting level directly under Luminaire (Lux)	Luminaire Spacing (Metres)													
		Escape Route						Open Plan							
		0.5lx 1.0lx		0.5lx 1.0lx		0.5lx 1.0lx		0.5lx 1.0lx		0.5lx 1.0lx		0.5lx 1.0lx			
2m	14.11	6.7	5.9	15.0	13.4	10.5	8.7	6.1	4.0	2.0	1.5	4.9	3.7	12.5	9.8
2.5m	9.03	7.7	6.6	17.5	15.4	11.7	9.8	6.0	4.1	2.1	1.8	5.1	3.6	13.4	10.2
3m	6.27	8.6	7.2	19.7	17.2	12.7	10.9	5.7	4.6	2.3	1.9	5.2	3.4	14.0	10.4
4m	3.53	9.9	7.2	23.5	19.8	14.7	12.6	6.0	5.4	2.7	2.3	5.0	2.6	14.6	9.9
6m	1.57	9.5	3.4	28.8	19.0	18.2	12.8	7.7	6.6	3.3	2.4	3.3	-	13.7	6.6
8m	0.88	5.7	-	28.9	11.4	18.9	9.1	9.0	6.8	3.4	-	-	-	10.5	-
10m	0.56	2.5	-	22.2	5.0	15.9	5.2	9.7	5.4	2.7	-	-	-	-	-

Escape Route



Open Plan

