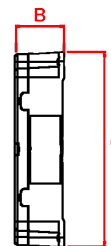
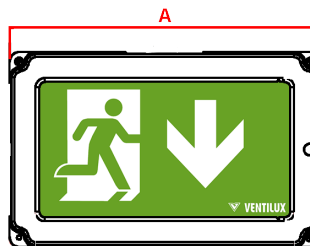


TREO

IP65 Exit Box



IP 65	6Y Warranty	IK 10	Wall Mounted
30M Viewing Distance	1.05Kg	LiFePO4 Battery	6000K

Materials

Housing: ABS
 Decals: Polycarbonate

Standard Colour: White Ral 9016
 Alternative Colour: Black Ral 9017
 *add WH for White or BL for Black housing to order code

Warranty

Standard Warranty: 6 Years
 Alternative Warranty: 10 Years
 Add /10Y to Order Code

Order Code	TRM3/LED/*
Mode of operation	Maintained
Emergency duration	3 hours
Input voltage	230/240V 50/60Hz
Power consumption	8.5VA, I _{nom} = 0.035A
Battery type	3.2V 1.5Ah LiFePO4 battery
Battery charger	0.15A (0mA at full battery)
Battery low voltage cut off	2.6 VDC
Battery discharge current @ 3.2VDC	0.35A
Lamp	P _{rated} = 1.5W LED
Lamp colour	6000K
Nominal Lamp Power in emergency	P _{rated} = 0.8W LED
Nominal Lamp Current in mains	250mA
Viewing Distance	30 metres
Lamp Lifetime	L ₈₀ B ₅₀
Maximum output voltage with no lamp connected	U OUT = 7.9 VDC
Degree of protection	IP65, IK10
Cable Entry	To be Drilled and Glanded on installation
Luminaire class	Class I
Weight	1.05kg
Packaging Weight	0.103kg
Standards	EN61347-2-7, EN61347-2-13, EN 60598-2-22
Environment	0°C to 45°C up to 80% relative humidity.

System	Order Code	Mode of Operation	Battery	Battery P/N	Viewing Distance	Dimensions (mm)		
						A	B	C
Standalone	TRM3/LED/*	Maintained	3.2V 1.5Ah LiFePO4	-	30 Metres	323	203	52
Alternative Systems Available:								
DALI	TRM3/LED*/DA	Maintained	3.6V 2.1Ah NiMh	70158	30 Metres	323	203	52
Central Battery	TR/LED/230S/*	Slave	n/a	n/a	30 Metres	323	203	52
DALI Central Battery	TR/LED/230S*/DA	Slave	n/a	n/a	30 Metres	323	203	52

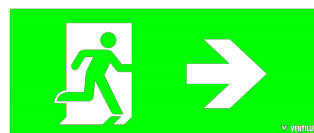
Legends (Supplied with Product)



01 for application of Left Arrow



02 for application of Down Arrow



3 for application of Right Arrow



04 for application of Up Arrow