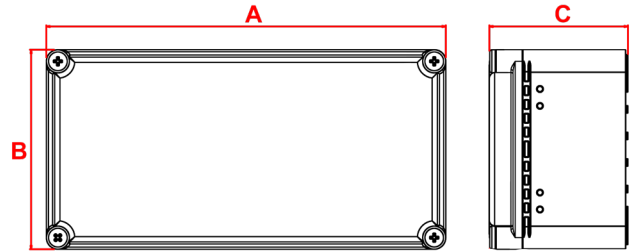
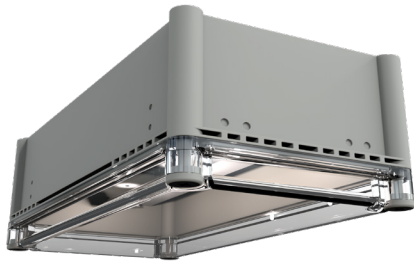


SKYLUX IP67

10W Self-Test Emergency Bulkhead



Order Code	ZSKNM3L10WIP67ST
Mode of operation	Non-Maintained Self-Test
Emergency duration	3 Hours
Input voltage	220-240V AC
Power consumption	6VA
Battery type	9.6V 6.4Ah LiFePO4
Battery low voltage cut off	8V
Battery discharge current @ 9.6V DC	1.15A
Lamp	6 X 1.5 Watt WHITE CREE LED
Lamp colour	6000K Cool White
Lamp lumen level in emergency	1200
Nominal lamp voltage	17.5V
Nominal lamp current	0.55A
Nominal lamp power	10 Watts
Maximum output voltage with no lamp connected	U-OUT=46V DC
Ingress Protection	IP67
Impact Resistance	IK10
Cable entry	To be Drilled and Glanded on installation (Glands not included)
Dimensions	368mm(L) x 150mm(W) x 102mm(H)
Luminaire class	Class I
Product Weight	2.6 Kg
Packaging Weight	0.24 Kg
Standards	EN61347-2-7, EN 60598-2-22, EN 55015
Environment	0°C to 25°C up to 80% relative humidity

Materials

Housing: Polycarbonate
Geartray: Painted Sheet Steel

Standard Colour: Grey
Alternative Colours: Available on request

Warranty

Standard Warranty: 6 Years
Alternative Warranty: 10 Years
Add **/10Y** to order code

System	Order Code	Mode of Operation	Battery	Battery P/N	Lumens (Emergency)	Dimensions (mm)		
						A	B	C
Self-Test	ZSKNM3L10WIP67ST	Non-Maintained	9.6V 6.4Ah LiFePO4	70255	1200	379	189	132
Alternative Systems Available:								
DALI	ZSKNM3L10WIP67DA	Non-Maintained	9.6V 6.4Ah LiFePO4	70255	1200	379	189	132
Standalone	ZSKNM3LED9WIP67	Non-Maintained	9.6V 4.5Ah NiCd	70247	1200	379	189	132
Central Battery	ZSKL9W230SIP67	Slave	n/a	n/a	1200	379	189	132

Photometrics

Mounting Height	Lighting level directly under Luminaire	↔		↔		↔		↔		↔	
		0.5	1.0	0.5	1.0	0.5	1.0	0.5	1.0	0.5	1.0
2m	52.64	13.7	11.3	32.8	27.4	30.7	25.4	28.7	23.5	11.7	9.7
2.5m	33.71	15.2	12.5	36.5	30.3	34.0	28.1	31.5	25.9	13.0	10.7
3m	23.42	16.5	13.4	39.8	32.9	36.9	30.6	34.0	28.2	14.1	11.5
4m	17.21	17.6	14.3	43.3	35.1	39.4	32.7	36.5	30.2	15.1	12.1
6m	13.18	18.6	15.0	46.5	37.1	41.8	34.5	38.8	31.9	15.9	11.5
8m	10.42	19.5	15.7	49.5	38.9	44.0	36.1	40.9	33.3	16.7	12.1
10m	8.44	20.3	15.2	52.1	40.5	45.8	37.4	42.9	34.4	17.2	12.7

